

CareCella

CareCella Bubble TocToc Serum

케어셀라 버블톡톡 세럼

* This document is meant for internal training purposes only.

Unauthorized use is strictly prohibited.



화장품 과대 광고에 대한 법률

지킴은 모든 회원 분이 과대광고로 인하여, 피해가 가지 않도록 건전한 광고 문화에 힘쓰고 있습니다.

아래의 관련 법률을 참고하시어, 허위 과대광고로 이어지지 않도록 많은 협조 부탁드립니다.



1. 의약품으로 잘못 인식할 우려가 있는 내용, 제품의 명칭 및 효능·효과 등에 대한 표시·광고를 하지 말 것
2. 경쟁상품과 비교하는 표시·광고는 비교 대상 및 기준을 분명히 밝히고 객관적으로 확인될 수 있는 사항만을 표시·광고하여야 하며, 배타성을 띤 " 최고 " 또는 " 최상 " 등의 절대적 표현의 표시·광고 하지 말 것
3. 사실과 다르거나 부분적으로 사실이라고 하더라도 전체적으로 보아 소비자가 잘못 인식할 우려가 있는 표시·광고 또는 소비자를 속이거나 소비자가 속을 우려가 있는 표시·광고를 하지 말 것
4. 품질·효능 등에 관하여 객관적으로 확인될 수 없거나 확인되지 않았는데도 불구하고 이를 광고하거나 법 제2조제1호에 따른 화장품의 범위를 벗어나는 표시·광고를 하지 말 것
5. 저속하거나 혐오감을 주는 표현·도안·사진 등을 이용하는 표시·광고를 하지 말 것
6. 국제적 멸종위기종의 가공품이 함유된 화장품임을 표현하거나 암시하는 표시·광고를 하지 말 것
7. 사실 유무와 관계없이 다른 제품을 비방하거나 비방한다고 의심이 되는 표시·광고를 하지 말 것

[발체] 화장품법 시행규칙 제 22조(표시·광고의 범위 등) [시행 2018. 4. 19.] [총리령 제1454호, 2018. 4. 11., 타법개정]

[별표5] <개정 2017. 1. 12.> 화장품 표시·광고의 범위 및 준수사항

CareCella

Bubble TocToc Serum

케어셀라 버블톡톡 세럼

1. Product Details
2. How to Use/Order of Use
3. Product Features
4. Fine Bubble Effect
5. Main Ingredients
6. Application Tips

* This document is meant for internal training purposes only.
Unauthorized use is strictly prohibited.



Product Details

+ Effects : Hydration, Brightening, Helps to reduce the appearance of wrinkles, Helps to make skin appear tighter and more lifted

+ Tested for Safety and Quality Assurance by Dermatest

+ Ingredients : Volufiline(Hydrogenated Polyisobutene, Anemarrhena Asphodeloides Root Extract), Niacinamide, Adenosine, Glycine Soja (Soybean) Phytoplacenta Extract, Ginsenosides, Sodium Hyaluronate, Copper Tripeptide-1, peptide complex (Acetyl Hexapeptide-8, Hexapeptide-9, Tripeptide-1, Tripeptide-3), Hydrolyzed Collagen, Butyrospermum Parkii (Shea) Butter, Centella Asiatica Extract, Camellia Sinensis Leaf Extract

+ Net Quantity : 120mL



How to Use

① Cleanse the skin and apply toner prior to using this product.

- * Areas of Use : Face and Neck
- * Do not apply to lips, immediate eye area, other sensitive areas, or damaged or broken skin

② Apply a light layer of the product onto the face and neck, focusing application on the forehead, cheeks, and smile lines around the mouth.

- * If you rub the product into the skin from the beginning, the fine bubbles will not form.

③ Allow the fine bubbles to fully form.

④ After the bubbles have fully formed and reduced to about 1/3 (of the full formation), gently pat remaining bubbles into the skin and massage for 1-2 minutes.

(Storage Instructions)

-> Store in a cool dry place. Keep away from high heat and excessive sunlight.



Order of Use

+ NORMAL SKIN



Toner



Bubble Toc Toc Serum

+ DRY SKIN



Toner



Serum



Bubble Toc Toc Serum



Deep Emulsion



CareCella
BUBBLE TOCTOC
SERUM

케어셀라 버블톡톡 세럼

서늘한 곳에 보관하여 사용해 주십시오

고온주의

120mL (4.06 FL.OZ.)

Product Features

+ **Volufiline**

Contains 50,000ppm of Volufiline a cosmetic ingredient developed by Sederma of France

+ **Fine Bubble Effect**

Fine bubbles that effervesce as they are rubbed into the skin, help to hydrate and refresh the skin

+ **5 Peptide Complex**

Helps to refine skin texture for a youthful look
Copper Peptide (Copper Tripeptide-1), Peptide Complex (Acetyl Hexapeptide-8, Hexapeptide-9, Tripeptide-1, Tripeptide-3)

+ **Brightens Skin Tone**

Contains Niacinamide to help brighten the skin tone

+ **Reduces the Appearance of Wrinkles**

Contains Adenosine to help reduce the appearance of wrinkles

+ **Hyaluronic Acid and Hydrolyzed Collagen**

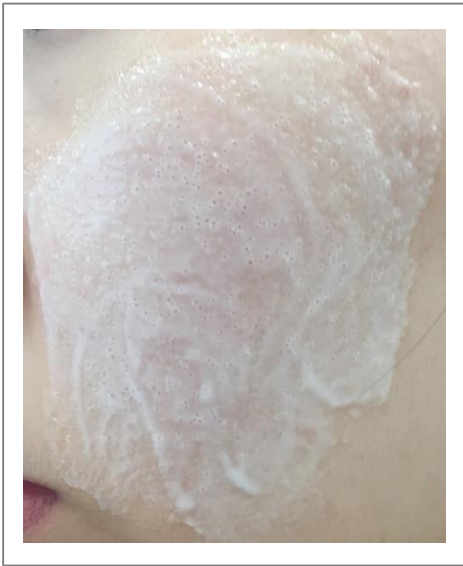
Hydrates the skin



Fine Bubble Effect

+ Apply a light layer of the product

=> If the product is massaged into the skin right away, the fine bubbles will not form.



+ Light layer of product applied to the skin

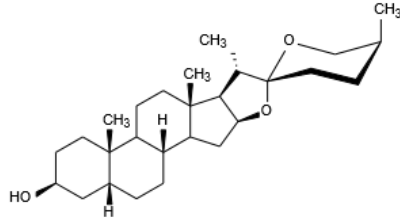


+ Fully formed bubbles



Main Ingredients

+ Volufiline



Volufiline, is a plant based cosmetic ingredient, developed by Sederma (a widely recognized cosmetic ingredient developer in France) derived from *Anemarrhena Asphodeloides* Root extract. It is recognized as an effective cosmetic ingredient from products released thus far, and has been clinically tested long term in Europe.

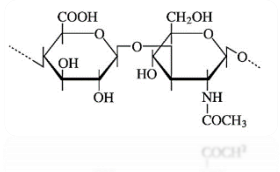


Main Ingredients



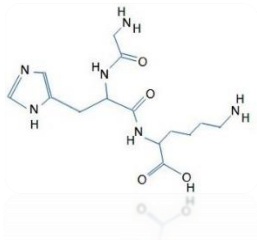
Glycine Soja (Soybean) Phytoplacenta Extract

- Nourishing ingredient extracted through low temperature extraction and separation/purification methods.



Hyaluronic Acid (Sodium Hyaluronate)

- Helps to retain optimal moisture content.

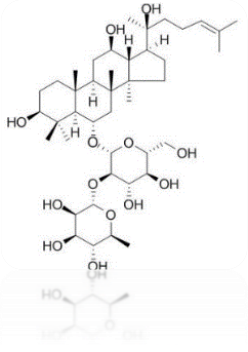


Peptide Complex

- Contains Copper Peptide (Copper Tripeptide-1), Peptide Complex (Acetyl Hexapeptide-8, Hexapeptide-9, Tripeptide-1, Tripeptide-3)

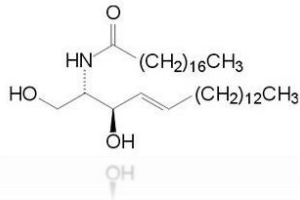


Main Ingredients



Ginsenoside

- Helps to nourish the skin



Ceramide

- (Glucosyl Ceramide, Phospholipids, Cholesterol)
- Helps to nourish and protect the skin

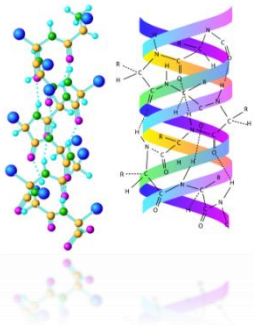


Shea Butter

- Natural and hydrating shea butter extracted from fruit of Shea trees
- Plant based fat that replenishes hydration and nourishment to dry skin and make it soft and smooth.



Main Ingredients



Hydrolyzed Collagen

- Hydrates the skin and helps to retain moisture.



Centella Asiatica Extract

- Hydrates and soothes the skin.



Green Tea Extract

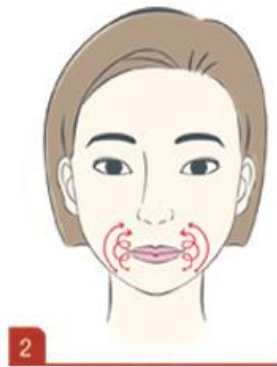
- Helps to condition the skin



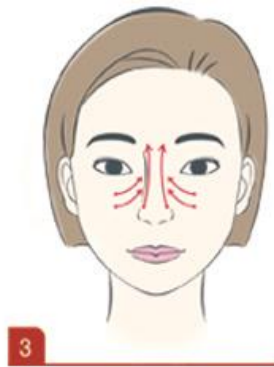
Application tips



1
Cheeks - Divide the cheek into 3 sections and massage from the inside of the face to the outside of the face using a zig zag motion.



2
Smile Lines (around the mouth) - Massage the product into the skin using an upward motion.



3
Nose - Massage the product into the skin using an upward motion.



4
Eye Area - Massage the product into the skin using an outwards + circular motion. Do not apply product to the eyelids.



5
Forehead - Divide into upper and lower sections and massage from the inner parts of the face to the outer parts of the face using a zigzag motion.

