

GCOOP

# GCOOP PERFECTPRO FILTER



**GC**  
GCOOP

# GCOOP



# GCOOP PERFECTPRO FILTER

1. Overview
2. Features
3. Test Results
4. Certification
5. Patent
6. Specifications
7. Installation
8. FAQ

# CONTENTS.

# PERFECTPRO FILTER

The patented bio-adsorption material has improved adsorption performance compared to existing cation exchange resins. It removes water hardeners (calcium, magnesium) that cannot be removed by existing shower filters, as well as heavy metals and lime components harmful to the human body.

PERFECTPRO FILTER is a shower/faucet filter that effectively removes ionic contaminants (water hardeners, heavy metals, lime, etc.). Protect your skin with PerfectPro Filter.

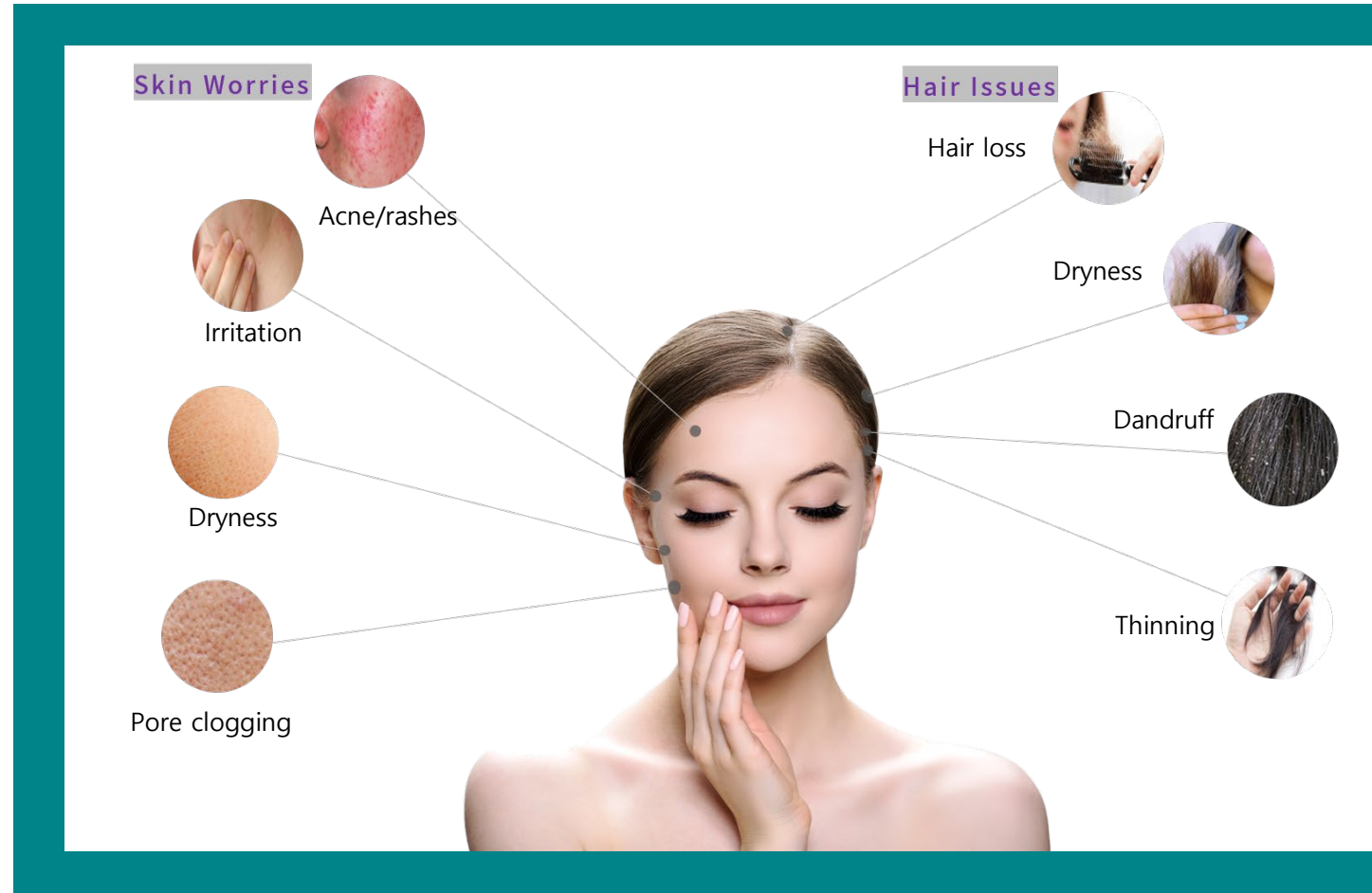


## ISSUE #1

# Calcium & Hard Water

When abroad, you may find that water in other countries may contain calcium and ionic heavy metals that can cause hair, scalp, and skin problems.

GCOOP PERFECT FILTER can help you prevent such problems for a safe and happy trip.



### Lifestyle Issue



Water spots



Drain clogging



Fabric damage

## ISSUE #2

# Calcium & Hard Water

Calcium in the water can cause stains after dish washing, drain blockage, and fabric damage after laundry.

GCOOP PERFECTPRO FILTER can help you prevent such problems to maintain a safe and healthy household.

## Features

# PERFECTPRO FILTER

- Patented bio-adsorption material for superior performance over existing cation exchange resins.
- Filters harmful heavy metals in the water harmful to the body.
- Prevents stains and drain blockage by filtering calcium.
- Filters residual chlorine in the water.
- Easy installation for use anywhere and anytime.
- Water hardener, heavy metals, calcium, and micro-organism filtration effectiveness certified by official tests in South Korea.







## Features

# PERFECTPRO FILTER



## Benefits

### #1. Beauty & skin care

#### Beauty\_Water Softener

GCOOP PERFECTPRO FILTER effectively absorbs and removes water hardening substances such as calcium and magnesium, while softening the water. The sodium recycling feature used in the past has been removed.

#### Skin Care\_Ionic Heavy Metal Remover

GCOOP PERFECTPRO FILTER effectively absorbs and removes heavy metal ions such as nickel, arsenic, lead, and cadmium, helping prevent possible skin problems and other health-related issues.



## Features

# PERFECTPRO FILTER

---



## Benefit

### #2. Calcium Removal

Calcium within the water can cause dry skin, hair damage, drain blockage, dish stains, clothing stains, and other problems in daily life.

GCOOP PERFECTPRO FILTER effectively absorbs and removes calcium in the water with its high-performance patented material.



## Features

# PERFECTPRO FILTER Test

Testing	U.S. Tap Water	U.S. Filtered	Vietnam Tap Water	Vietnam Filtered	Malaysia Tap Water	Malaysia Filtered
<b>Arsenic</b>	Not detected	Not detected	Not detected	Not detected	Not detected	Not detected
<b>Lead</b>	Not detected	Not detected	Not detected	Not detected	Not detected	Not detected
<b>Limestone (HCO<sub>3</sub>)</b>	146	≤1	68	≤1	9	≤1
<b>Ca</b>	0.39	<b>0.03</b>	23	<b>0.21</b>	10.4	<b>0.17</b>
<b>Mg</b>	≤0.01	≤0.01	5.19	<b>0.01</b>	0.88	≤0.01
<b>U</b>	0.003	≤0.001	≤0.001	≤0.001	≤0.001	≤0.001
<b>Cs</b>	≤0.001	≤0.001	≤0.001	≤0.001	≤0.001	≤0.001
<b>Microorganism</b> (General bacteria/E. coli )	OCFU/m (optimal) OCFU/ml (optimal)	OCFU/m (optimal) OCFU/ml (optimal)	TNTC (nonoptimal) 70CFU/ml (nonoptimal)	400CFU/ml (nonoptimal) 17CFU/ml (nonoptimal)	105CFU/ml (nonoptimal) OCFU/ml (optimal)	37CFU/ml (optimal) OCFU/ml (optimal)

\* Tests conducted at Korea Testing & Research Institute (KTR). (Microorganisms excluded)

\* General bacteria ≤ 100CFU/ml optimal, E. coli not detected optimal (Korean standard)

## Features

### PERFECTPRO FILTER Test

Testing	Taiwan Tap Water	Taiwan Filtered	Japan Tap Water	Japan Filtered
<b>Arsenic</b>	Not detected	<b>Not detected</b>	Not detected	<b>Not detected</b>
<b>Lead</b>	Not detected	<b>Not detected</b>	Not detected	<b>Not detected</b>
<b>Limestone (HCO<sub>3</sub>)</b>	16	≤1	41	≤1
<b>Ca</b>	5.16	<b>0.24</b>	18.9	<b>0.55</b>
<b>Mg</b>	2.1	≤0.01	4.88	<b>0.03</b>
<b>U</b>	≤0.001미만	≤0.001	≤0.001	≤0.001
<b>Cs</b>	≤0.001미만	≤0.001	≤0.001	≤0.001
<b>Microorganism (General bacteria/E. coli)</b>	TNTC (nonoptimal) 0CFU/ml (optimal)	<b>7CFU/m (optimal)</b> <b>0CFU/ml (optimal)</b>	0CFU/m (optimal) 0CFU/ml (optimal)	<b>0CFU/m (optimal)</b> <b>0CFU/ml (optimal)</b>

\* Tests conducted at Korea Testing & Research Institute (KTR). (Microorganisms excluded)

\* General bacteria ≤ 100CFU/ml optimal, E. coli not detected optimal (Korean standard)

# PERFECTPRO FILTER TEST

---

## Calcium Removal Test

Before Use



\* Impurities remain within tap water

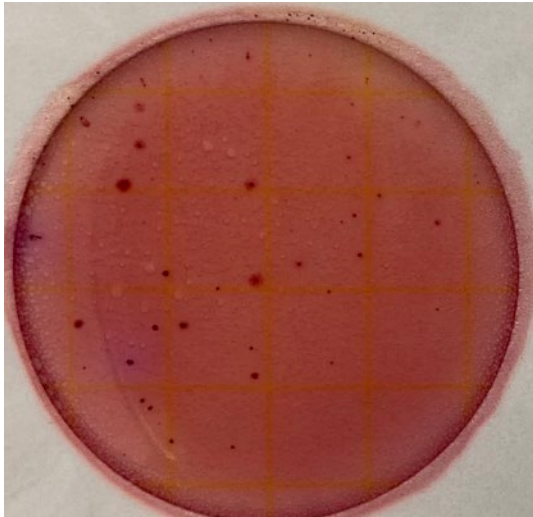
PERFECTPRO FILTER (After Use)



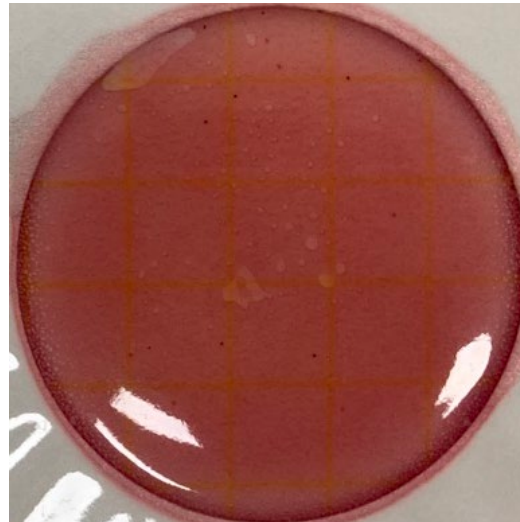
\*Impurities removed from tap water

# PERFECTPRO FILTER TEST

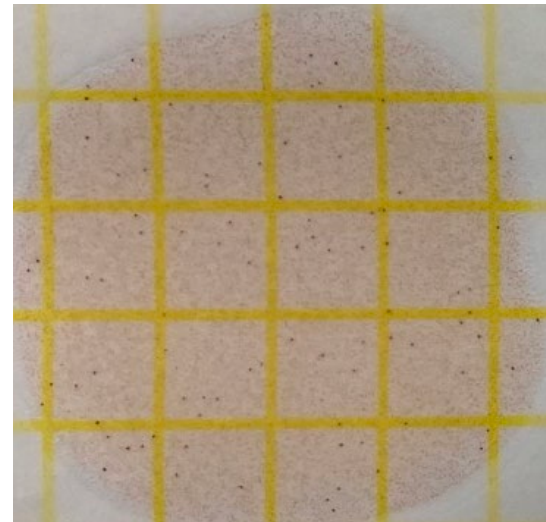
## Microorganism Test



Tap Water  
**Pathogenic Bacteria**



Filtered with PERFECTPRO FILTER  
**Pathogenic Bacteria**



Tap Water  
**Microorganisms**

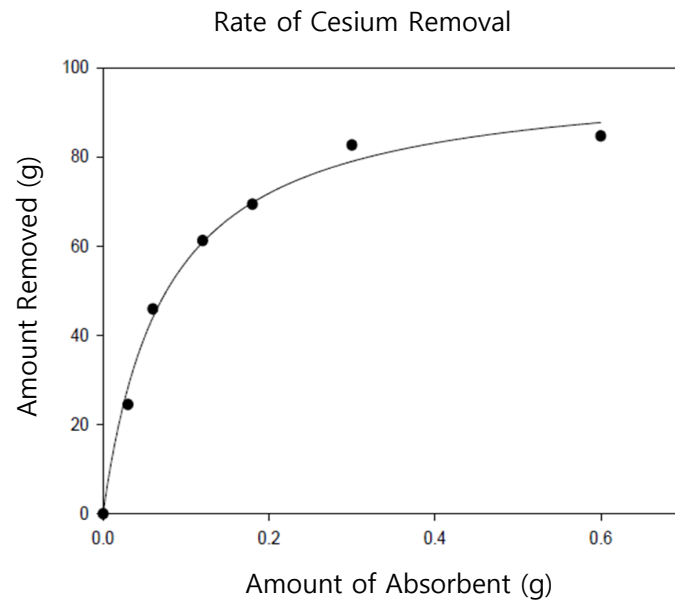


Filtered with PERFECT FILTER  
**Microorganisms**

Using GCOOP PERFECTPRO FILTER drastically decreases the number of bacteria and microorganisms.  
GCOOP PERFECTPRO FILTER is effective in removing pathogenic bacteria and microorganisms.

# PERFECTPRO FILTER TEST

## Cesium Removal Test



Amount of Absorbent (g)	0	0.03	0.06	0.12	0.18	0.3	0.6
Cesium Concentration (ppm)	98.00	74.00	53.00	38.00	30.00	17.00	15.00
Cesium Absorbed	-	24.00	22.50	15.00	11.30	8.10	4.20
Rate of Removal	-	24.49	45.92	61.22	69.39	82.65	84.69

### #1. Objective

- Cesium Absorption Test

### #2. Conditions

- Initial Cesium Concentration : 100ppm
- Volume : 30ml
- Time : 24hr
- Absorbent : GCOOP Bio Absorbent



# Certification

BEYOND ASIAN HUB, TOWARD GLOBAL WORLD

## TEST REPORT

우 13810 경기도 과천시 교육원로 98(중앙동) TEL (043)211-6144 FAX (043)211-6144

성적서번호 : TAK-2023-010535  
 대표 자 : 이주동  
 업 체 명 : (주)마루바이오  
 주 소 : 충북 청주시 청원구 덕벌로41번길 10, 1층(내덕동)

접 수 일 자 : 2023년 01월 16일  
 시험완료일자 : 2023년 02월 01일

시 료 명 : 원수 (미국)

### 시험결과

시험항목	단위	시료구분	결과치	시험방법
비소	mg/L	-	불검출(정량한계 : 0.05)	국립환경과학원고시 제 2022-12호(2022.02.21.)
납	mg/L	-	불검출(정량한계 : 0.04)	국립환경과학원고시 제 2022-12호(2022.02.21.)
HCO <sub>3</sub> <sup>-</sup> ( as CaCO <sub>3</sub> )	mg/L	-	146	Standard Methods for the Examination of Water and Wastewater, 23rd Edition (APHA, AWWA, WEF) : 2017
Ca	mg/L	-	0.39	Standard Methods for the Examination of Water and Wastewater, 23rd Edition (APHA, AWWA, WEF) : 2017
Mg	mg/L	-	0.01 미만	Standard Methods for the Examination of Water and Wastewater, 23rd Edition (APHA, AWWA, WEF) : 2017
U	mg/L	-	0.003	Standard Methods for the Examination of Water and Wastewater, 23rd Edition (APHA, AWWA, WEF) : 2017
Cs	mg/L	-	0.001 미만	Standard Methods for the Examination of Water and Wastewater, 23rd Edition (APHA, AWWA, WEF) : 2017

-용 도 : 품질관리용

- 다음 페이지 -

Tang Seung Chan  
작성자 : 장성찬  
Tel : 02-2092-3831

Lee Juhoo  
기술책임자 : 이주희  
Tel : 1577-0091(ARS ①-④)

2023년 02월 01일

**KTR** 한국화학융합시험연구원

위변조 확인용 QR cod

Page : 1 of 2

전자문서본은 시험결과에 대한 참고용입니다.

KTR KOREA TESTING & RESEARCH INSTITUTE(KTR-QP-P09-F01-02000) A4(210 X 297)

BEYOND ASIAN HUB, TOWARD GLOBAL WORLD

## TEST REPORT

우 13810 경기도 과천시 교육원로 98(중앙동) TEL (043)211-6144 FAX (043)211-6148

성적서번호 : TAK-2023-010536  
 대표 자 : 이주동  
 업 체 명 : (주)마루바이오  
 주 소 : 충북 청주시 청원구 덕벌로41번길 10, 1층(내덕동)

접 수 일 자 : 2023년 01월 16일  
 시험완료일자 : 2023년 02월 01일

시 료 명 : Purkit 필터 처리수 (미국)

### 시험결과

시험항목	단위	시료구분	결과치	시험방법
비소	mg/L	-	불검출(정량한계 : 0.05)	국립환경과학원고시 제 2022-12호(2022.02.21.)
납	mg/L	-	불검출(정량한계 : 0.04)	국립환경과학원고시 제 2022-12호(2022.02.21.)
HCO <sub>3</sub> <sup>-</sup> ( as CaCO <sub>3</sub> )	mg/L	-	1 미만	Standard Methods for the Examination of Water and Wastewater, 23rd Edition (APHA, AWWA, WEF) : 2017
Ca	mg/L	-	0.03	Standard Methods for the Examination of Water and Wastewater, 23rd Edition (APHA, AWWA, WEF) : 2017
Mg	mg/L	-	0.01 미만	Standard Methods for the Examination of Water and Wastewater, 23rd Edition (APHA, AWWA, WEF) : 2017
U	mg/L	-	0.001 미만	Standard Methods for the Examination of Water and Wastewater, 23rd Edition (APHA, AWWA, WEF) : 2017
Cs	mg/L	-	0.001 미만	Standard Methods for the Examination of Water and Wastewater, 23rd Edition (APHA, AWWA, WEF) : 2017

-용 도 : 품질관리용

- 다음 페이지 -

Tang Seung Chan  
작성자 : 장성찬  
Tel : 02-2092-3831

Lee Juhoo  
기술책임자 : 이주희  
Tel : 1577-0091(ARS ①-④)

2023년 02월 01일

**KTR** 한국화학융합시험연구원

위변조 확인용 QR code

Page : 1 of 2

전자문서본은 시험결과에 대한 참고용입니다.

KTR KOREA TESTING & RESEARCH INSTITUTE(KTR-QP-P09-F01-02000) A4(210 X 297)

BEYOND ASIAN HUB, TOWARD GLOBAL WORLD

## TEST REPORT

우 13810 경기도 과천시 교육원로 98(중앙동) TEL (043)211-6144 FAX (043)211-6148

성적서번호 : TAK-2023-010537  
 대표 자 : 이주동  
 업 체 명 : (주)마루바이오  
 주 소 : 충북 청주시 청원구 덕벌로41번길 10, 1층(내덕동)

접 수 일 자 : 2023년 01월 16일  
 시험완료일자 : 2023년 02월 01일

시 료 명 : 원수 (베트남)

### 시험결과

시험항목	단위	시료구분	결과치	시험방법
비소	mg/L	-	불검출(정량한계 : 0.05)	국립환경과학원고시 제 2022-12호(2022.02.21.)
납	mg/L	-	불검출(정량한계 : 0.04)	국립환경과학원고시 제 2022-12호(2022.02.21.)
HCO <sub>3</sub> <sup>-</sup> ( as CaCO <sub>3</sub> )	mg/L	-	68	Standard Methods for the Examination of Water and Wastewater, 23rd Edition (APHA, AWWA, WEF) : 2017
Ca	mg/L	-	23.0	Standard Methods for the Examination of Water and Wastewater, 23rd Edition (APHA, AWWA, WEF) : 2017
Mg	mg/L	-	5.19	Standard Methods for the Examination of Water and Wastewater, 23rd Edition (APHA, AWWA, WEF) : 2017
U	mg/L	-	0.001 미만	Standard Methods for the Examination of Water and Wastewater, 23rd Edition (APHA, AWWA, WEF) : 2017
Cs	mg/L	-	0.001 미만	Standard Methods for the Examination of Water and Wastewater, 23rd Edition (APHA, AWWA, WEF) : 2017

-용 도 : 품질관리용

- 다음 페이지 -

Tang Seung Chan  
작성자 : 장성찬  
Tel : 02-2092-3831

Lee Juhoo  
기술책임자 : 이주희  
Tel : 1577-0091(ARS ①-④)

2023년 02월 01일

**KTR** 한국화학융합시험연구원

위변조 확인용 QR code

Page : 1 of 2

전자문서본은 시험결과에 대한 참고용입니다.

KTR KOREA TESTING & RESEARCH INSTITUTE(KTR-QP-P09-F01-02000) A4(210 X 297)

BEYOND ASIAN HUB, TOWARD GLOBAL WORLD

## TEST REPORT

우 13810 경기도 과천시 교육원로 98(중앙동) TEL (043)211-6144 FAX (043)211-6148

성적서번호 : TAK-2023-010538  
 대표 자 : 이주동  
 업 체 명 : (주)마루바이오  
 주 소 : 충북 청주시 청원구 덕벌로41번길 10, 1층(내덕동)

접 수 일 자 : 2023년 01월 16일  
 시험완료일자 : 2023년 02월 01일

시 료 명 : Purkit 필터 처리수 (베트남)

### 시험결과

시험항목	단위	시료구분	결과치	시험방법
비소	mg/L	-	불검출(정량한계 : 0.05)	국립환경과학원고시 제 2022-12호(2022.02.21.)
납	mg/L	-	불검출(정량한계 : 0.04)	국립환경과학원고시 제 2022-12호(2022.02.21.)
HCO <sub>3</sub> <sup>-</sup> ( as CaCO <sub>3</sub> )	mg/L	-	1 미만	Standard Methods for the Examination of Water and Wastewater, 23rd Edition (APHA, AWWA, WEF) : 2017
Ca	mg/L	-	0.21	Standard Methods for the Examination of Water and Wastewater, 23rd Edition (APHA, AWWA, WEF) : 2017
Mg	mg/L	-	0.01	Standard Methods for the Examination of Water and Wastewater, 23rd Edition (APHA, AWWA, WEF) : 2017
U	mg/L	-	0.001 미만	Standard Methods for the Examination of Water and Wastewater, 23rd Edition (APHA, AWWA, WEF) : 2017
Cs	mg/L	-	0.001 미만	Standard Methods for the Examination of Water and Wastewater, 23rd Edition (APHA, AWWA, WEF) : 2017

-용 도 : 품질관리용

- 다음 페이지 -

Tang Seung Chan  
작성자 : 장성찬  
Tel : 02-2092-3831

Lee Juhoo  
기술책임자 : 이주희  
Tel : 1577-0091(ARS ①-④)

2023년 02월 01일

**KTR** 한국화학융합시험연구원

위변조 확인용 QR code

Page : 1 of 2

전자문서본은 시험결과에 대한 참고용입니다.

KTR KOREA TESTING & RESEARCH INSTITUTE(KTR-QP-P09-F01-02000) A4(210 X 297)

U.S. Tap Water

U.S. Tap PERFECTPRO FILTERed

Vietnam Tap Water

Vietnam Tap PERFECT FILTERed

# Patents



## PERFECTPRO FILTER Specifications

Product Use	Shower/Faucet Filter
Filter Life	Varies depending on water quality and usage Europe: 2-4 weeks, Southeast Asia: 3-5 weeks
Main Component	Bio Absorbent (patented)
Weight	150g (0.33 lbs)
Material	PP
Temp. of Use	under 50°C (122°F)
Pressure of Use	1~7 kg/cm <sup>2</sup> (14-100 lbs/in <sup>2</sup> )
Manufactured & Distributed by	Marubio co. 10 Deokbeol-ro 41-gil, Cheongwon-gu, Cheongju-si, Chungcheongbuk-do
Date of Manufacture	Marked Separately
Expiration Date	3 years from opening
Origin	Made in Korea
Contact	043-223-3473
Website	<a href="http://www.purikit.com">www.purikit.com</a>
Product Use	Travel / Household Shower Filter



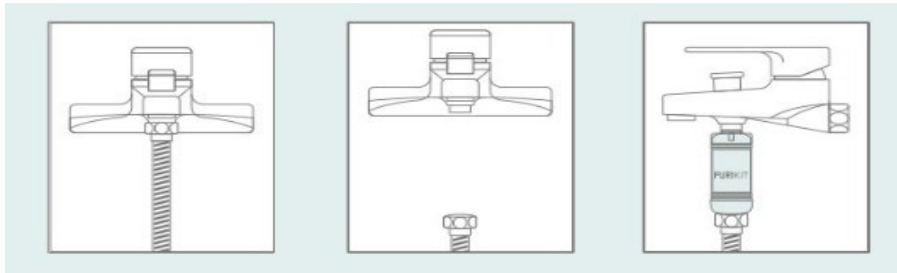
## Installation

### PERFECTPRO FILTER Faucet Installation

---



1. Unscrew the hose from the faucet.
2. Screw one end of the filter onto the faucet and the hose onto the other end.
3. The filter is made to fit the global faucet size (unless an adapter is required).
4. Use the black rubber washer (included) if there is leakage at the top of the filter.



## Installation

### PERFECTPRO FILTER Showerhead Installation



1. Unscrew the showerhead from the hose.
2. Screw the showerhead onto the top and the hose to the bottom of the filter
3. Place the showerhead at a safe location to prevent it from falling.





## Installation

### PERFECTPRO FILTER Pipe Connection Guide

---



1. If the pipe does not fit the filter, adapters are required.
2. Both male and female adapters are needed if the pipe does not fit the filter.
3. Adapters can be purchased from hardware and household appliance retailers.
4. The filter's screw diameter is ½".

# FAQ

## PERFECTPRO FILTER FAQ

### 1. How is it different from all the other shower filters?

#### 1) Showerheads with white filters

The picture below are sediment filters for showerheads.



The white cylindrical filters are sediment filters. As the word suggests, these filters remove small purities from the water that passes through. If they do not contain other materials such as chlorine balls, the filter can only remove small impurities and rust.



### PERFECTPRO FILTER FAQ

---

#### **1. How is it different from all the other shower filters?**

##### **1) Normal Shower Filters**

Normal filters are also put between the showerhead and the hose looks very much like the GCOOP filter. Most contain sediment filters and scent which are only capable of removing only small particles and residual chlorine.

##### **2) GCOOP PerfectPro Filter**

The patented bio absorbent forms ionic bonds to remove impurities from the water.

The absorbent can remove limestone, heavy metals, calcium, and magnesium, making the water safer and softer.

The filter can prevent hair, scalp, and skin problems both at home and abroad, as well as keeping dishes free of water spots.

## PERFECTPRO FILTER FAQ

---

### **2. How long does the filter last?**

Large amounts of minerals and heavy metals and increased water use decreases the life of the filter. Approximate filter life in Europe is 2-4 weeks and 3-5 weeks in Southeast Asia.

### **3. How do I know when to replace the filter?**

The absorption of impurities cannot be visually observed and because of the differences in the water content and the amount used, it is difficult to estimate the exact time for replacement. Once you start using the filter, you will be able to tell when it is time to replace the filter as the water will feel different.

### **4. What is the size of the screw thread and where can it be used?**

GCOOP PerfectPro Filter's screw diameter is the global standard of G 1/2", making it usable on almost 99% of showers. Pipe sizes may differ depending on faucet type (rain shower, skin faucet) and location (U.S., Europe, Southeast Asia, etc.). In such cases, pipe adapters (coupling) can be purchased to fit the specific pipe size.

### PERFECTPRO FILTER FAQ

---

#### **5. Can you drink the filtered water?**

GCOOP PerfectPro Filter was designed to filter water used for body and dish washing. We do not recommend drinking the filtered water or using it for fish tanks. Please note that some regions of the world may have poor water quality and that the filter alone will not be enough to make the water safe for use. In such regions, it is highly recommended that you use bottled, purified water.





**Thank You**