

# CareCella

CareCella

## Magic Peeling Gel

케어셀라 매직 필링겔



\* This document is meant only for internal training and shall be kept confidential. It is prohibited to disclose or post any information included in this document

# CareCella



## CareCella Magic Peeling Gel

케어셀라 매직 필링젤

1. Product Details
2. Product Features
3. Main Ingredients
4. How to Use
5. Recommended for
6. Before & After

\* This material is for internal educational purposes and cannot be taken out or posted externally.

# 1. Product Details

---

- + **Effects:** Exfoliates, Tones, Clarifies, Improves Elasticity, Moisturizes, Adds Glow
- + **Main Ingredients:** Salix Alba (Willow) Bark Extract, Hydrolyzed Collagen, Hyaluronic Acid, Hippophae Rhamnoides Fruit Extract, Morus Alba Bark Extract, Fullerenes, Rosa Damascene Flower Oil
- + **Contents:** 100mL
- + **Frequency:** 1-2 times a week
- + **Areas of application:** Face and Body
- + **Storage Instructions:** Store in a cool dry place
- + **Precautions**

Please store product in a cool dry place

Do not store near extreme temperatures (extremely hot or cold) as it may affect the product formulation.



## 2. Product Features

---

### + Efficient Skin Care

#### Targets 6 needs all in 1 product

Exfoliates+ Tones + Clarifies + Improves Elasticity + Moisturizes + Adds Glow

### + Excellent Exfoliant

Product contains Willow Bark Extract as well as other ingredients that are beneficial for extracting waste and pollutants from the skin

### + Mild and Gentle

Mild, non-irritating and moisturizing feeling when used by forming a moisture barrier on the skin

### + Clarifies Skin

Contains Hippophae Rhamnoides Fruit Extract, Morus Alba Bark Extract which help to clarify the skin.

### + Healthy Skin

Contains Fullerenes, a Nobel Prize winning Ingredient which promotes clear healthy skin.



## 2. Product Features

---

### 6 in 1 Peeling Gel

CareCella Magic Peeling Gel enhances the six skin care effects of **Exfoliates + Tones + Clarifies + Improves Elasticity + Moisturizes + Adds Glow** with carefully selected ingredients.

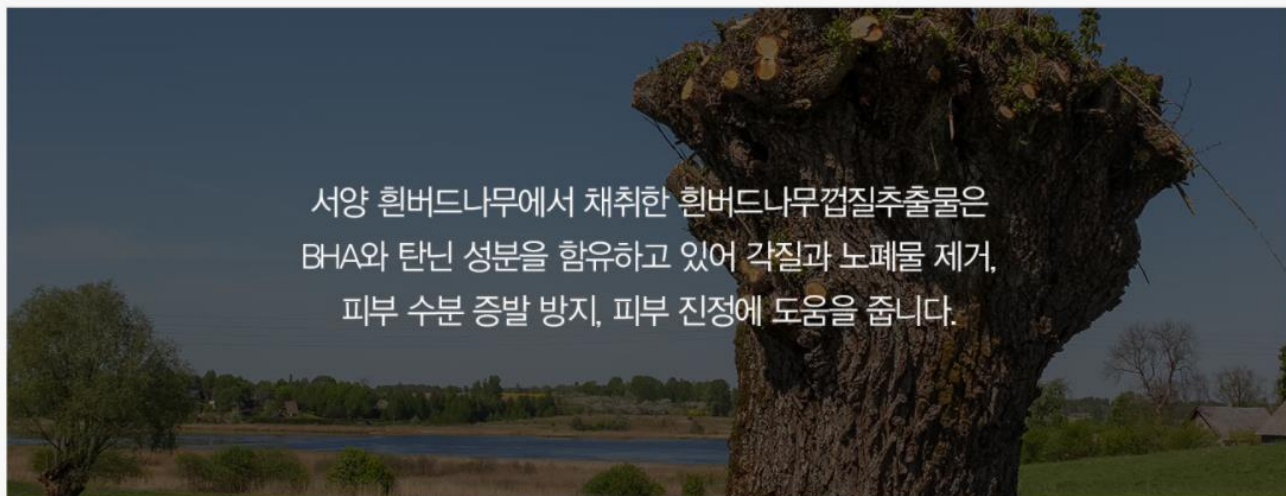




## 2. Product Features

---

**‘White willow bark extract’  
helps exfoliates and soothe skin**



## 2. Product Features

---

**Contains Fullerenes, a Nobel Prize winning ingredient which promotes clear healthy skin.**

(Only related to the characteristics as raw materials)



## 2. Product Features

---

# Skin Illumination ON Clear-Bright skin

Contains vitamin tree fruit extract and mulberry bark extract.

Gives clear and transparent skin.





## 2. Product Features

---

# Moisturizing hypoallergenic peeling gel

This product has been tested to be hypoallergenic to the skin, with a thin texture without granules that is mild to use and has a moisturizing finish with moisturizing ingredients.



### 3. Main Ingredients

---



#### 흰버드나무껍질추출물

BHA와 탄닌 성분을 함유하고 있어 각질과 노폐물 제거, 피부 수분 증발 방지, 피부 진정에 도움을 줍니다.



#### 비타민나무열매추출물

산자나무추출물이라고도 불리며 비타민 C가 매우 풍부하여 안색 개선에 도움을 줍니다.



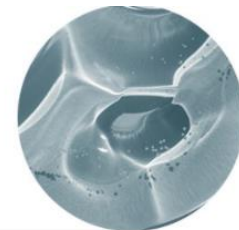
#### 뽕나무껍질추출물

상백피추출물이라고도 불리며 피부 결을 유연하게 하고 컨디셔닝을 부여하며 피부 색소 침착을 완화하여 맑은 피부 톤으로 가꾸는 데 도움을 줍니다.



#### 히알루론산 (소듐하이알루로네이트)

피부 수분 증발을 막고 적절한 수분 상태를 유지하도록 도움을 줍니다.



#### 하이드롤라이즈드콜라겐

피부에 수분을 공급하여 촉촉한 피부로 유지하는 데 도움을 줍니다.



#### 플러린

노벨화학을 수상한 성분으로 활성산소를 제거하여 피부 손상을 차단하고 피부를 맑고 생기있게 가꾸어 줍니다.

Only related to the characteristics as raw materials

### 3. Main Ingredients

---



#### 병풀추출물

호랑이 풀이라고도 불리며 자극감 완화, 건조감 예방에 도움을 줍니다.

#### 식물추출물

알로에베라잎추출물, 감초추출물, 녹차추출물 등 피부 보습과 영양 공급, 피부 진정에 도움을 줍니다.



#### 다마스크장미오일

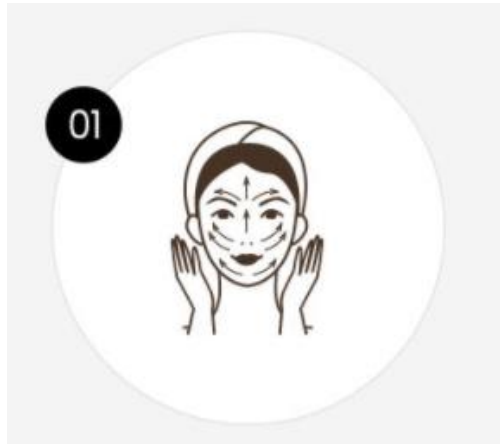
보습효과와 식물성 컨디셔닝제로서 피부 활력 상승에 도움을 주며 안정감을 주는 아로마 효과에도 도움을 줍니다.

Only related to the characteristics as raw materials

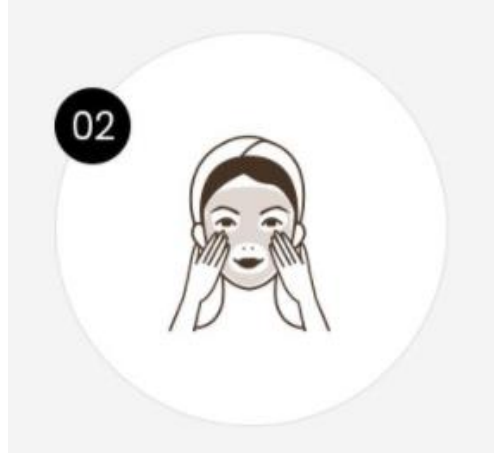


## 4. How to Use

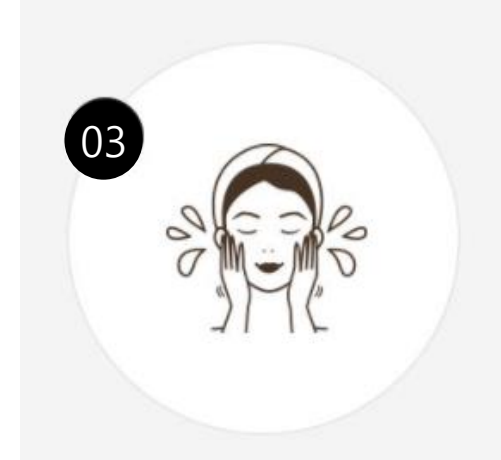
---



Apply an appropriate amount to your face in a dry state and wait for 1 to 2 minutes..



Rub the product gently as if using a scrub. Continue to rub for 1-2 minutes, concentrating the product on areas that need exfoliation



Rinse product off with lukewarm water.

1. Can be used on hand and elbow
2. When used on wet skin, the product may not properly exfoliate

## 4. How to Use

---

+ Example



Apply the product on a clean dry skin



Leave it for 2-3 minutes



Rub for 1-2 minutes



Rinse with lukewarm water



# CareCella



## 5. Recommended for

---

- ✓ Crisp skin due to dead skin cells
- ✓ Skin with lifted makeup
- ✓ Dull and uneven skin tone
- ✓ Skin with irregularities in skin texture and a lot of sebum
- ✓ Skin that needs hypoallergenic peeling gel

# 6. Before & After



Before



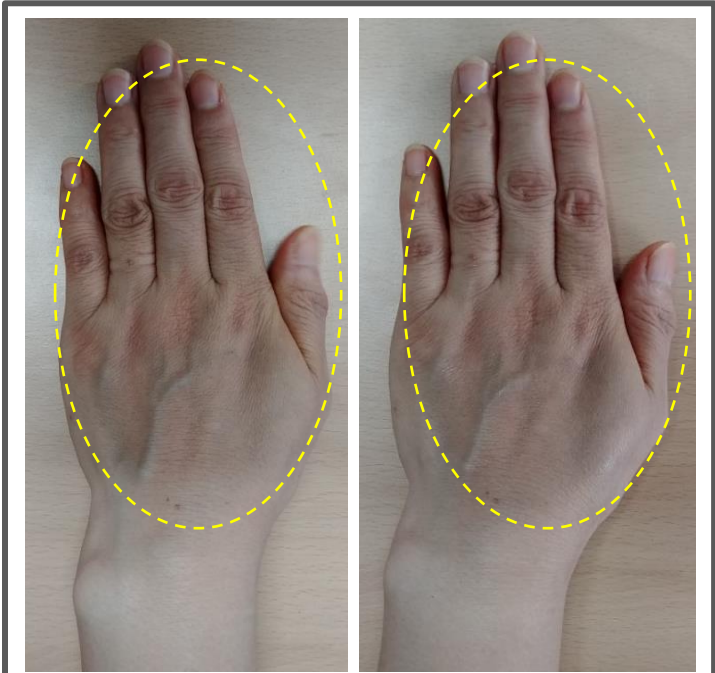
After (1 time use)



Before



After (1 time use)



Before



After (1 time use)