

Telomera GK





Eat & Apply
Turn Back Cellular Time

Reverse Aging

Two Paths to Cellular Renewal

To Eat & Apply



Natural & Wellness-Focused
Nourishment and protection

Inside and Out –
Complete care from one Brand

Key Components & Technology



Extracting only the active ingredients
within the core ingredients
Maximize **bioavailability with enzyme
conversion method**

Nature of Aging



Aging begins with the clock of
our cells – not our skin
Telomera Brand **target Telomeres**,
the root of aging, from **within**



Lips & Cheeks
Tongue
Teeth
Gums
Hard & Soft Palates
Salivary Glands

Gut Health Starts in the Mouth!

The oral cavity houses over **700** different species of bacteria. It's the **second largest** and most diverse microbiome

How the Mouth Impacts Overall Health



- **Initial Digestion:** The digestive process begins in the mouth with chewing and saliva, which moistens food and contains enzymes to start breaking down starches.
- **Oral Microbiome:** The mouth is home to a complex microbiome, and the health of this oral community directly influences the gut microbiome.
- **Bacteria and Inflammation:** Oral infections or imbalances can introduce harmful bacteria to the digestive system. Chronic inflammation originating in the mouth can also spread systemically.
- **First Line of Defense:** The mouth acts as a gatekeeper and its health is crucial for protecting the body from pathogens.

Health begins in the mouth...
and Telomera GK protects where it all starts!

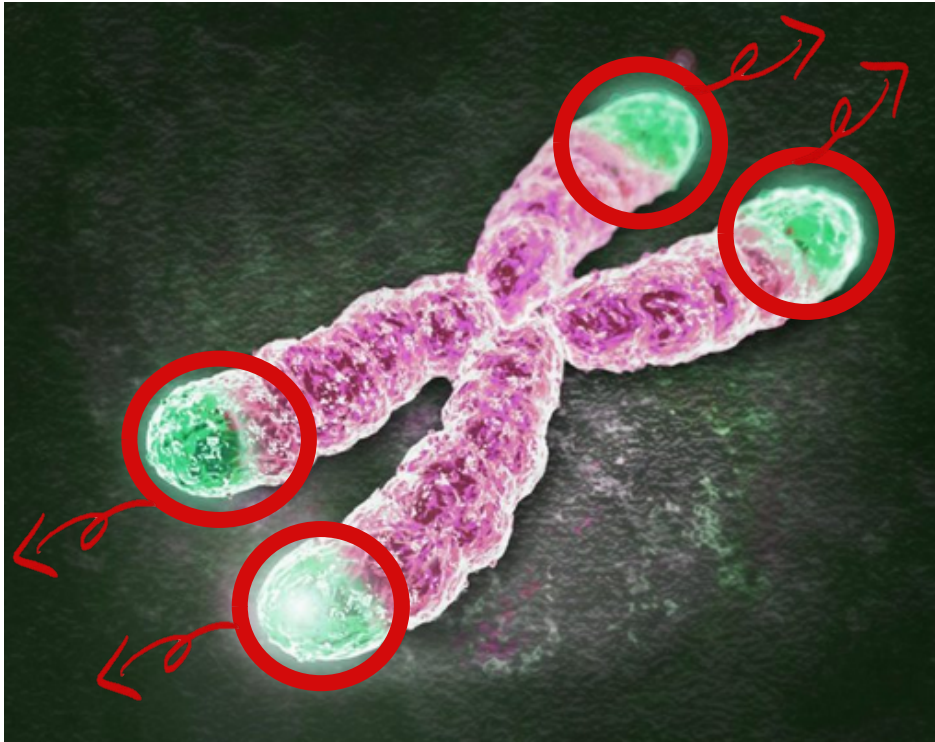


Telomera GK (OTF)

Oral Thin Film

- 1. Development Background**
- 2. Product Features**
- 3. Recommended For...**

Major Contributors to the Discovery of Telomeres



The shortening of telomeres...
means **Aging!**



Barbara McClintock
1902-1992
Nobel Prize 1983

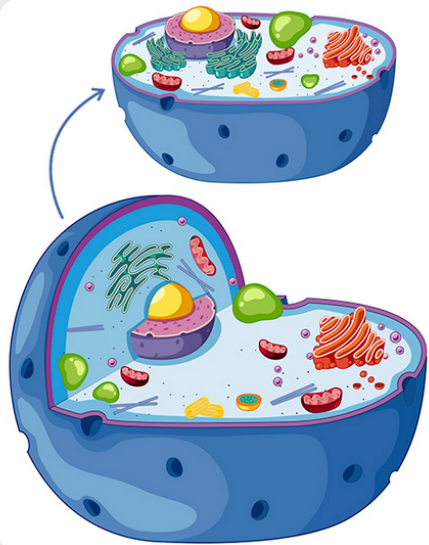


Hermann J. Muller
1890-1967
Nobel Prize 1946



Nobel Prizes 2009

WHAT IS A CELL?

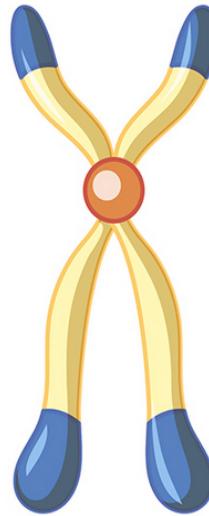


A **cell** is the structural, functional and biological unit of an organism. Cells are the basic building blocks of our muscles, bones and other organs. All living things are made of cells.

The human body is composed of **trillions of cells**. They are very small so we cannot see them with our eyes.

Every **cell** is composed by a *plasma membrane*, *cytoplasm* and a *nucleus* (in eukaryotic cells) or a *nucleoid* (in prokaryotic cells).

What is a CHROMOSOME?

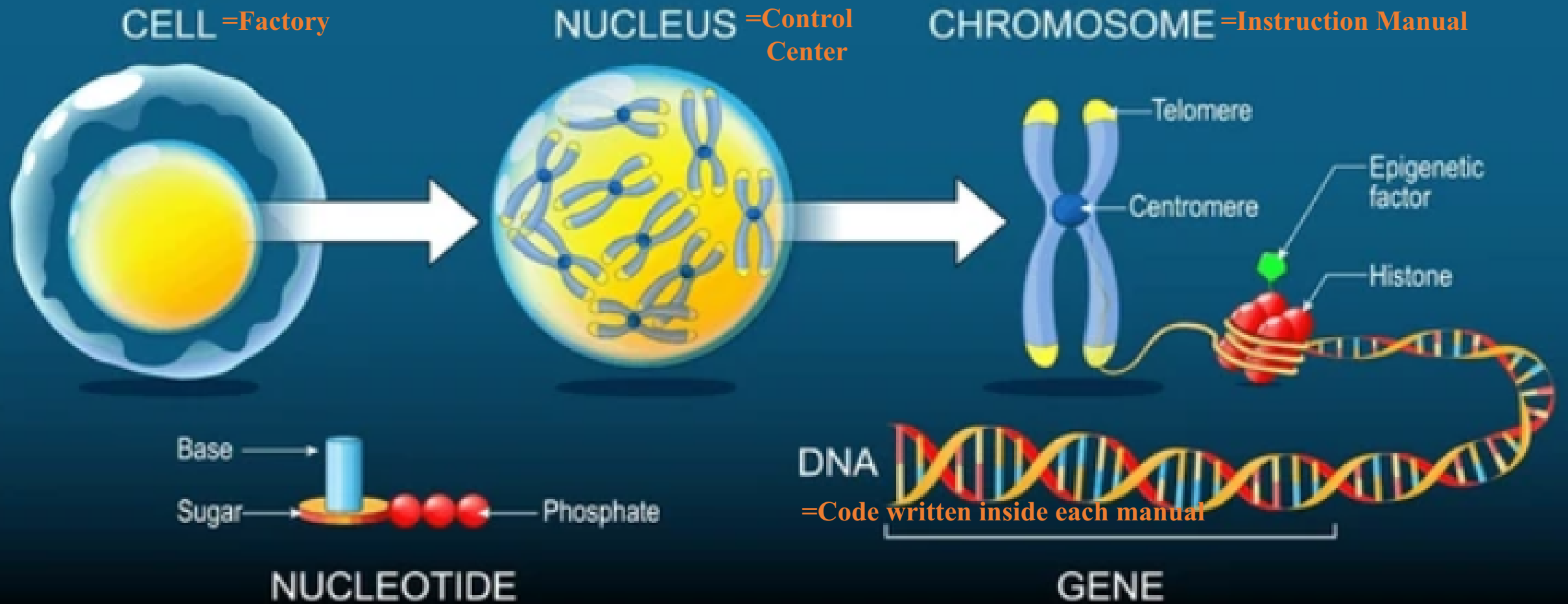


Chromosomes are structures found in the nucleus of cells and contain genetic information.

They are like the instruction manuals of our bodies, as they contain genes that determine our hereditary traits, such as eye color, height, etc.

Each human cell has **46 chromosomes**, which are organized in pairs. Half of the chromosomes come from the father and the other half from the mother.

Chromosomes are important because they ensure that genetic information is transmitted correctly from generation to generation and play a key role in the development and functioning of the organism.

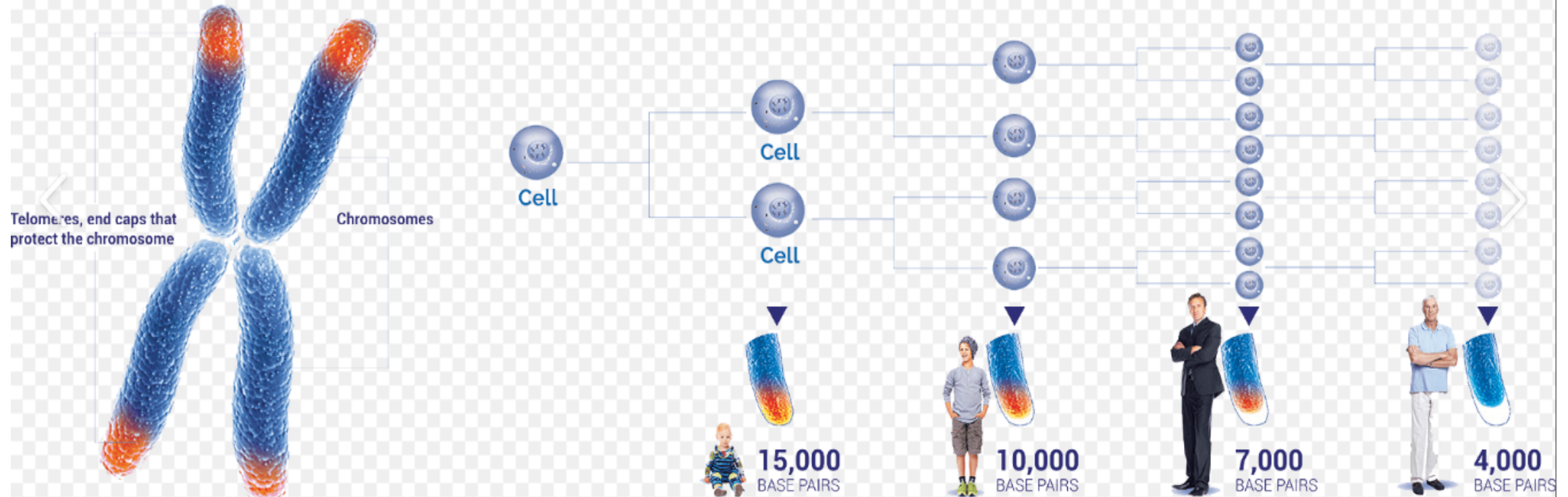


What are Telomeres?





What We Lose With Age



Why are Healthy Cells Important?



**Foundation of
the Whole Body**

**Cells are the building blocks
of tissues and organs.
When cells are healthy, the
the whole body stays healthy.**



Endless Rebirth

**Most cells, like skin and
blood cells, die and renew in
cycles. New cells stay
healthy when old cells are
healthy.**



**Prevents Aging
and Disease**

**If cells are damaged or not
complete, the body works less
well, causing aging, weak
immunity, and disease.**

Product Features



5 Key Features of Telomera GK



1

Rediscovered: Edible Essence of Centella Asiatica

Traditional herbal centella asiatica
scientifically reinterpreted next-generation
raw material GK

2

Dual Action Protecting & Activating Telomeres

Protecting the youth of cells
Dual Action Formula

3

Application of GCoop's Unique Mono-Aging Technology

Designed to reduce molecular weight and
consider the availability of ingredients
in the body

4

Easy Film Formulation Fast Absorption Rate

Easy to consume without water
Improves the effect by absorbing the
mucous membrane of the mouth

5

5 Blends of Synergy Booster

5 additional main ingredients
Balanced blending of ingredients

Key Point #1

Rediscovered ... the Edible Centella Asiatica (“CICA”)

Gotu^uKola

Once limited to skincare, now
extending benefits of Centella
Asiatica to **inner wellness**

Introducing **Edible**
Centella Asiatica
Delivering a **new** kind of
wellness **experience**



Creating **new** categories,
leading the market through
innovation

Breaking past boundaries
with truly **innovative**
products

Gotu Kola [“GK”]

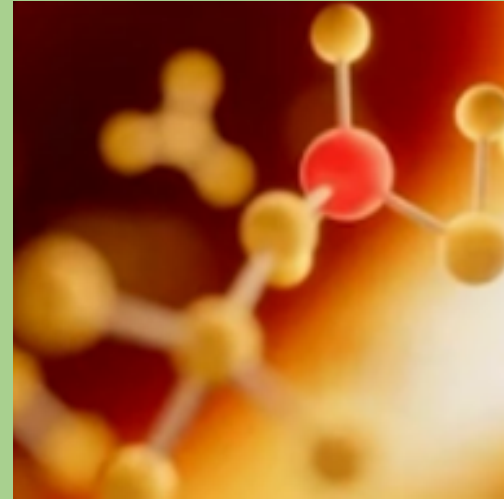


Longevity in Herbal Traditional Medicine



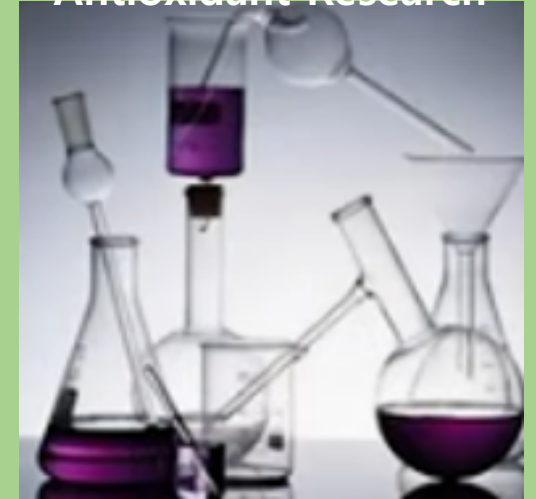
Known as the Tiger Grass “Leaf of Life”
Traditionally used in India and Sri Lanka
for Physical Recovery, Memory Support,
Cognitive Health & Longevity

Triterpenoid, Antioxidant, Regeneration



Contains ingredients of Madecassoside,
Asiaticoside and Triterpenoid
Focus Regenerative Medicine Research

Cognition, Hemorheology, Antioxidant Research



Recent studies have confirmed the
potential of next generation plant-based
health ingredients for cognitive function,
antioxidant effects, and improved
blood circulation

CICA Extract v. Mono GK

Regular CICA Extract

Various **mixed components** are present in Centella Asiatica

The **blend** of components **varies** according to the **source, cultivation, and extraction process**

Traditionally and commonly used ingredients



GK Complex™

Concentrated unification of **key active** ingredients of **Triterpenoid Saponin**

Provides **consistent** effects with standardized **high-purity** ingredient

High-purity concentrated ingredient extracted from the essence of **Gotu Kola**

Key Point #2

Application of GCoop's Unique Mono-Aging Technology



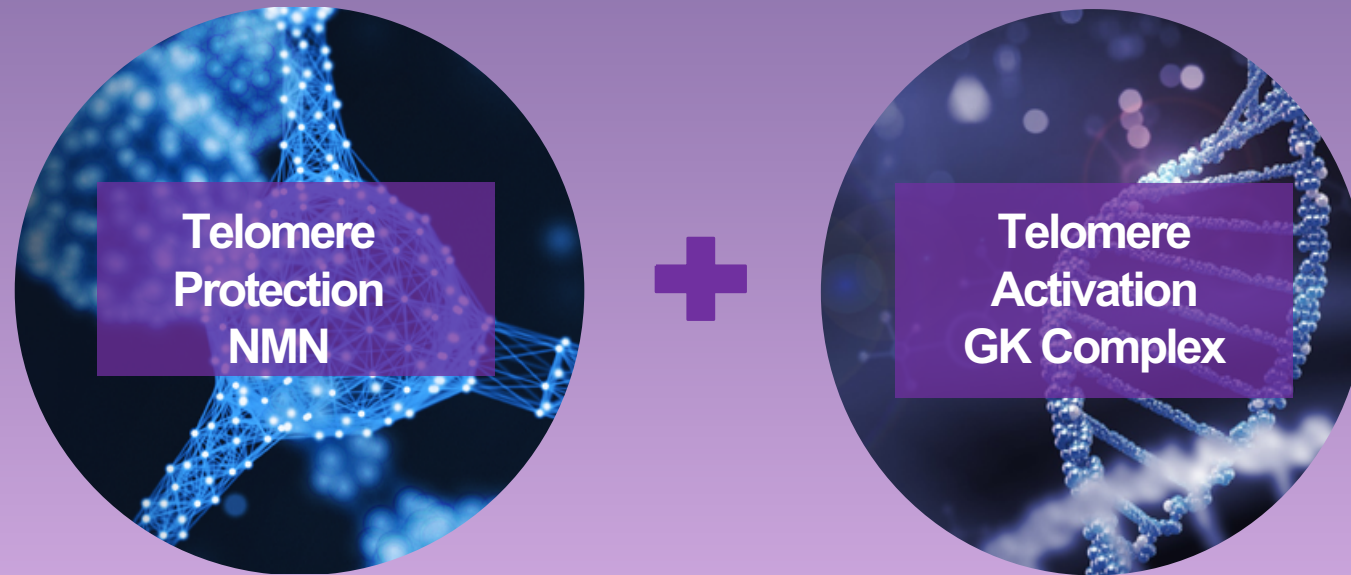
Not just ordinary Centella Asiatica — this formula uses a **special mono-glucoside structure** that **reduces molecular weight** and **activates** key functional sites. Advanced technology is applied to **boost absorption** and **enhance** the ingredient's **effectiveness** in the body.

Features of Mono-Aging GK Complex

Item	Existing Centella Asiatica Ingredients	Ingredients of Mono-Aging GK Complex
Structure	Polysaccharide Bonding	<i>Single unit</i>
Molecular Weight	Polymer	<i>Small molecule</i>
Absorption Rate	Low absorption rate (Functions as an edible Centella X)	<i>Engineered for optimal absorption</i>
Efficacy	Calming Features	<i>Scientifically formulated to support body's natural balance</i>
Raw Material	Natural Materials	<i>Innovative, technology-driven functional materials</i>
Form	Madecassoside, Asiaticoside	<i>Madecassoside Monoglucoside Asiaticoside Monoglucoside</i>

Key Point #3

Dual Action – Protecting & Activating Telomeres



Inspired by the latest research, the **powerful blend of GK Complex and NMN** introduces a breakthrough approach to wellness and vitality. Born from advanced global and domestic studies, **Telomera** utilizes the synergy of **GK Complex** and **NMN** to promote balance, rejuvenation, and complete vitality from within.

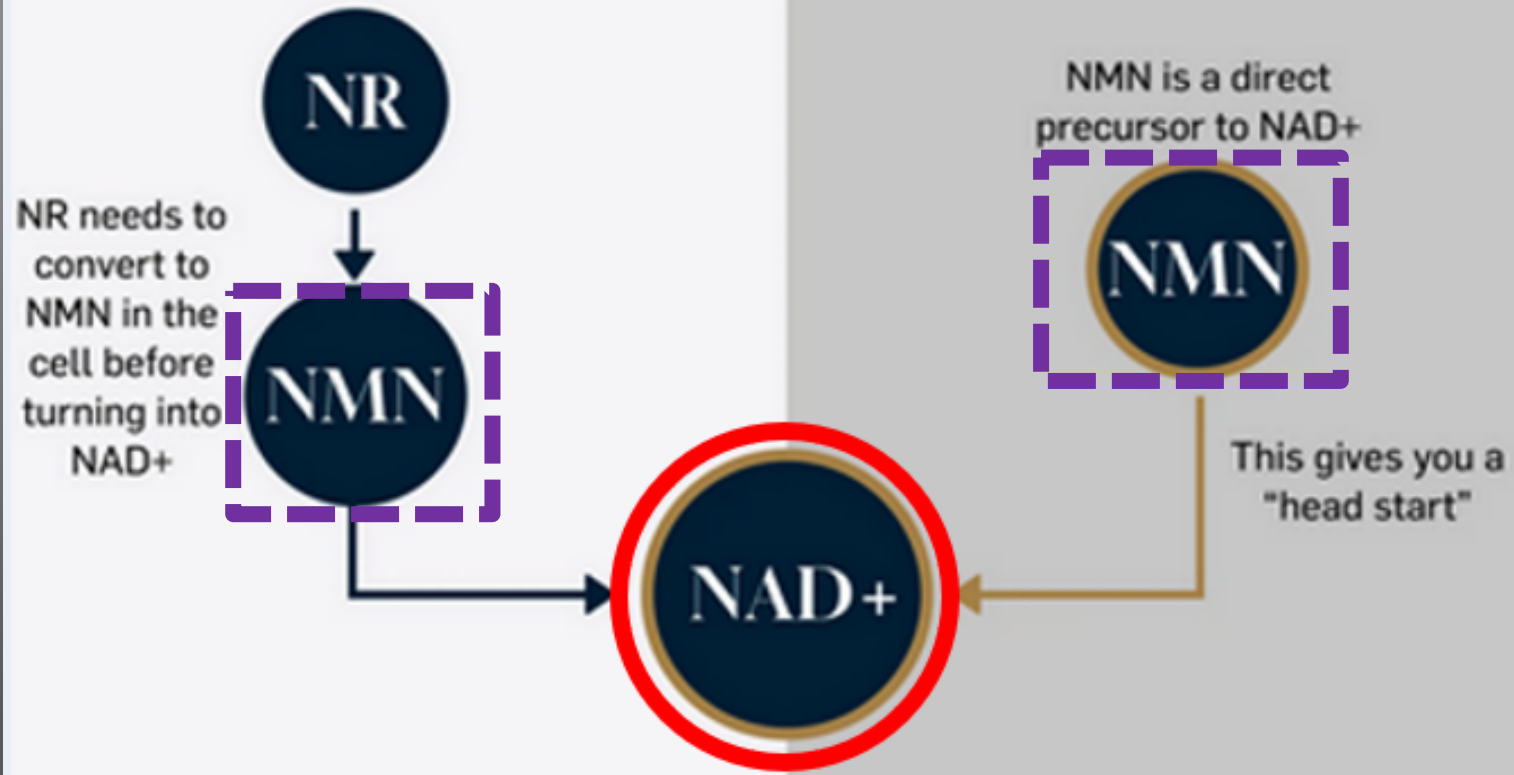
NR

NICOTINAMIDE RIBOSIDE

VS

NMN

NICOTINAMIDE MONONUCLEOTIDE



"Youth Battery"

Key Point #4

Easy Film (Sheet) Formulation / Fast Absorption Rate

Convenient Consumption



Designed for busy modern lifestyles. Easy & convenient for anyone to take. Best of all, no hassle... no water is needed!

Increasing Bioavailability



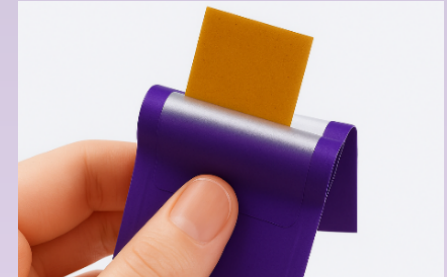
The film absorbs directly through the mouth, helping ingredients reach the bloodstream faster and work more effectively.

Excellent portability



Thin, light & easy to carry. Fits perfectly in your purse or pouch. Convenient to use anytime anywhere.

Differentiation of formulations



A new, enjoyable alternative to capsules and tablets — designed to boost satisfaction and set the brand apart.

Each piece is **individually sealed** and **packaged**, making it **simple to carry, store, and consume it at anytime, anywhere!**

Key Point #5

Synergy Booster 5 Blends



Quercetin

Senescent cell removal action,
Anti-inflammatory and
antioxidant effects



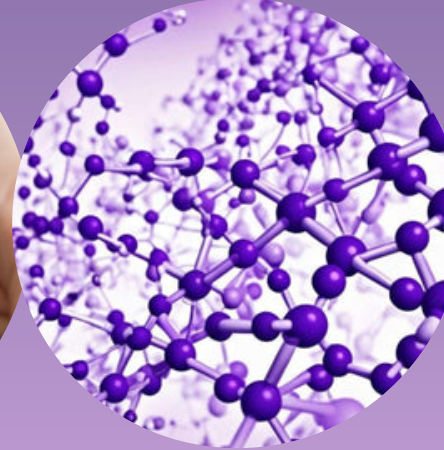
Berberine

AMPK activation is associated
with anti-aging mechanisms



Pterostilbene

A resveratrol derivative
cytoprotective and **SIRT1**
activation



Spermidine

Through **Autophagy**
induction cell cleansing action



Betaine

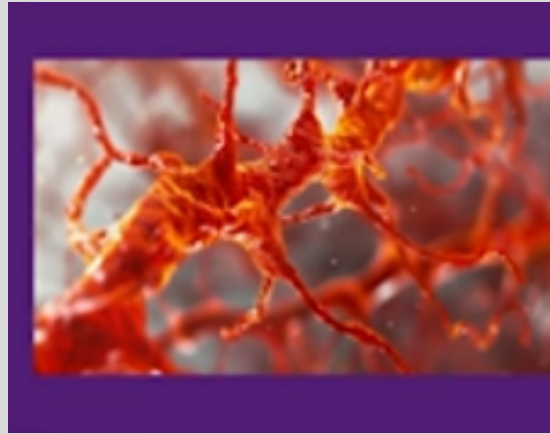
Acts on the
methylation process
Gene expression regulation

***AMPK**: Important enzymes that regulate energy metabolism in cells

***SIRT1**: NAD⁺-dependent protein deacetylase for cell homeostasis, lifespan, metabolic regulation, etc.. Protein components involved in cellular processes

***Autophagy**: The natural process of breaking down and recycling unwanted or damaged cellular components within a cell

Why is GK Formulated as an Oral Film?



Abundant Blood Vessels

Rich capillary networks in the oral mucosa enable rapid absorption directly into the bloodstream



Reduced Liver Metabolism

Bypassing the liver's first-pass effect preserves active ingredients and improves efficiency



Rapid & Safe Absorption

Thin mucosal layers allow quick onset of action with minimal gastrointestinal irritation



NMN

Core Formula Inspired by Telomere Research



Source of Cellular Vitality, NAD+ Precursors

As a precursor for NAD+, it contributes to increasing vitality by promoting cellular energy metabolism.



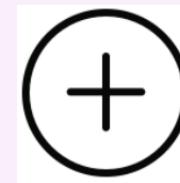
Key Ingredients Focused on Global Anti-Aging Research

Globally, NMN is actively being studied in relation to telomere stabilization and the potential for delaying cellular aging.



Potential for Comprehensive Care including Liver Health & Cognition

Positive potential has been reported in animal and clinical studies related to blood flow improvement, cognitive function, and metabolic balance
(expansive effects linked to overall health, not just simple supplementation).



Meet Oral Film Type and Ensure Usability

NMN may be degraded during the digestive process, but with GK's mono and film formulation, it is rapidly and efficiently absorbed through the oral mucosa.

A glowing DNA double helix structure, rendered in shades of blue and purple, spiraling upwards against a dark blue background with bokeh light effects.

TARGET AUDIENCE

Recommended For...



1

Those who want to start each day with vibrant and full of energy

2

Those who desire a healthy and active life

3

Those who recognize the importance of self-care over time

4

Those who want to manage their health easily amidst busy daily life

5

Those who want to proactively manage health through small habits

6

Those who want to combine food and skincare

Telomera GK

- Renewed Vitality
- Sharper Focus
- Resilient Energy
- Inner Radiance that Shows



One thin film...

Telomera Care that Activates the Moment it Melts!

Telomera GK

